



Pedestrian Access Control at Education Facilities.

Things have not been the same since March, but with the rumbling of returning to work and schools reopening in the coming weeks it is important that we look at how we can return safely and securely.

Evolve has produced this document to help inform, school leaders, governing boards, and local authorities about the latest thermal screening, face recognition with temperature and security products.



Education Facilities

To help manage school security in 2018 the Department for Education issued a non-statutory guidance document which sets out practical advice and highlights relevant legislation. The guidance is due for review in spring 2020.

When it comes to protecting people and premises, as well as satisfying the stringent Ofsted inspections, school leaders, governing boards and local authorities need to be sure it's security measures meet the necessary standards for a modern-day environment.

A good approach is to use a local security expert, such as an installer or specifier, who can give a balanced and professional opinion. A security expert will help find the best solution for your budget and protection needs.

There are plenty of elements that come together to make up a comprehensive school security plan for pedestrian access. Visitor badges, visitor escort procedures, and even emergency lockdown drills are all important.

Pedestrian access control and security is vital for any education facilities in protecting its students and satisfying Ofsted inspection. Ofsted inspectors need schools to demonstrate it has taken reasonable steps to ensure pupils are safe, including monitoring visitors and volunteers. An effective access control policy will ensure that students, staff, and visitors know exactly where to enter, what to do once they get inside, and how to get back out.

Good pedestrian access control can go a long way toward keeping potential criminals out and sets the tone for the rest of the site's security needs. A secure perimeter shows that your school takes safety and security seriously.





Identify the Security Risk

All schools must adopt an open and transparent security policy to ensure that staff and pupils are able to work and learn in a safe and secure environment. School security is ever changing and needs to be kept under constant review, with vulnerable areas identified and remedial actions implemented to address them. No two schools are identical, and the design of the buildings and the layout of the site will differ from school to school.

As you begin to think about pedestrian access control, it may help to consider your site as a series of concentric circles, with the outside ring being the entire school grounds (Perimeter) and other circles for the outside of the school building, a ring for each of the interior rooms, and even rings for certain specific assets within the rooms, in a locked cabinet, for example.

Most schools will not need to take extreme measures, such as a barbed wire fencing, but it should be clear to anyone when they have passed through each of these “rings”. They should know when they have officially stepped onto school property, and again when they have stepped into each increasingly protected area.

Entry Routes

Some of the most effective security measures are relatively inexpensive and make the most intuitive sense, these include keeping entry areas well-lit and free of hiding spaces. Removal of any landscaping or other obstacles that prevent a clear line of vision.

A well-defined entry route usually begins with well-marked visitor parking spaces, ideally separate from the student and staff parking. From there, the visitors should be given a clear, simple route to the visitor entrance. Site design can take advantage of things like landscaping and walkways to funnel visitors into a controlled, visible area.

Identify the Security Risk

Access Points

Appropriately worded signs should be displayed indicating opening times and directing visitors to the school office/reception. In addition, appropriately worded warning signs regarding the presence of an alarm system, monitored CCTV, trespassing and the fact that all property of value on the school premises is property marked should be displayed.

Main site entrances

Pedestrian access points should ideally be overlooked by the school office/reception. Other secondary site access points should be kept locked unless required for deliveries or other specific needs.

Main site entrances

Pedestrian access points should ideally be overlooked by the school office/reception. Other secondary site access points should be kept locked unless required for deliveries or other specific needs.

Doors

There should be one entrance to the school building via the office/reception, with clear directional signs indicating its location to visitors. All doors should be checked and assessed to ensure that the locking mechanisms are in working order and are fit for purpose. Glazing to doors should include one pane of attack resistant laminated glass.

Emergency exits are often a weak point, being left open and unsecured, allowing people to enter the building without checking in.

Reception Area

Reception areas may employ physical barriers that make it more difficult for visitors to past the reception area quickly or without authorisation. The reception desk can be oriented to give staff optimal visibility of the entry area.





Identify the Security Risk

Security lockdown

The head teacher or delegated member of staff will be responsible for judging the level of response required. The requirement for a security lockdown may result from a reported incident in the local community which could pose a potential physical risk to pupils and staff.

In the event of a risk from an intruder or if a security warning is received the school goes into a full lockdown mode as follows:

- All schools must have an agreed method of communication in this situation such as a WhatsApp group or similar and wait for instruction.
- The site should remain in a state of lockdown until a senior member of staff or the emergency services confirm that it has been lifted.
- The lockdown procedure should be practised at the start of each term and the head teacher should ensure that all staff are trained and aware of their roles should a lockdown be required.
- Security experts from Counter Terrorism Policing have commissioned the creation of an animated core film designed to teach 11 to 16-year olds people how to react if caught up in a gun or knife terror attack.

Visitors

Good pedestrian access control is essential to the security of the school during the school day. All visitors should report to the school office/reception, where the purpose of their visit can be established prior to them signing in and being issued with a visitor's badge, valid only on the day of issue. Visitors should not be allowed to access site unacknowledged or wander about the site unaccompanied.

Identify the Security Risk

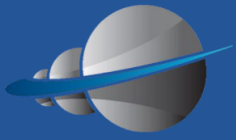
Staff

All school staff should report to the school office/reception or have some other means of signing in such as a staff access card that can monitor their attendance and restrict access to various parts of the site. They should be clearly identified as a member of staff by wearing an ID badge or similar identification, anyone not clearly identifiable as a member of staff should be challenged.

Student

All students should be issued with a student access card which allows them access to various parts of site that are relevant to the course they are on and monitor their attendance. A chemistry student, for example, may only have access to the labs when they are taking a practical module – whilst their friend studying history would only be able to access communal areas of the chemistry block to meet for a coffee.





SCREENING

Portable Thermal Image Screening Gun.



The Thermal 360 imaging camera is a highly accurate portable handheld temperature measuring instrument which can help in the fight against COVID-19.

It has an Hi/Lo temperature alarm, central point temperature measurement, high/low temperature auto tracking and real-time temperature display.

The camera can be connected to a PC for image analysing and supports SD card and USB import: with powerful image processing capability.

Disclaimer

Face temperature devices are not intended to diagnose or monitor any medical condition or illness. These products are supplied as a first-line defence for organisations that wish to identify and check people entering their buildings. It is down to the organisation to determine how that information is used, and the appropriate reaction to take.

Face Recognition with Temperature Detection.



The AndroidFace 7T face detection terminal with temperature detection can be easily interfaced with most makes of visitor and staff management systems via the Wiegand interface such as the Paxton Net2 controller.

Face recognition means that a person entering the building doesn't need to touch any surface providing a TouchLess entrance control solution.

The terminal can work as a stand-alone unit to control a simple door, pedestrian turnstile or gates; they can also be networked.

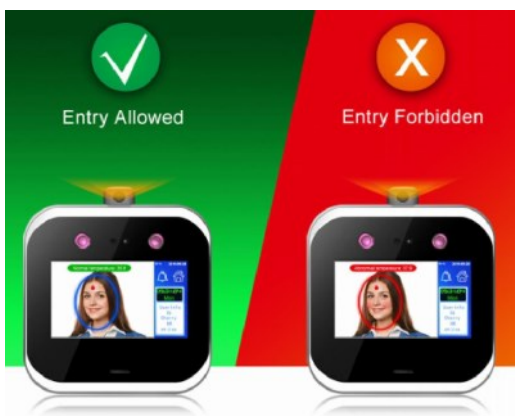
SCREENING

Face Recognition with Temperature Detection.



The EvolveFace 5T is a face recognition terminal with temperature detection and time and attendance function.

Before allowing entry, the forehead temperature sensor will check the person's temperature and decide whether to allow entry or not.

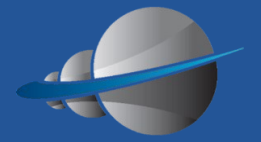


Wrist Temperature Measurement and Face

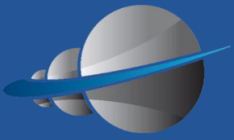


EvolveWrist is a standalone device that can check wrist temperature with face detection and also provides a reminder if no mask is worn. Making this perfect for use in the classroom or main reception area.

It features accurate temperature measurement real-time alarm of people with fever. Support real-time statistics of total number of temperature measurement both normal and abnormal.



Products For Schools



SCREENING

IP Thermal Bullet Camera



EvolveIP thermal bullet camera is perfect for all types of premises such as schools and universities to capture the face and temperature of a crowd of people.

This camera is great to check high volumes of staff and students quickly and securely ideal for site entrances and exits.

Body Temperature Smart Screening Camera



EvolveBody is an intelligent Wi-Fi thermal imaging camera for body temperature screening with built-in alarm.

It supports network processing for high-speed real-time temperature measurements, recording and surveillance.

The camera is perfect for places with high volume of people in a designated area.



ACCESS CONTROL

LinuxFace 7 - Face Recognition Access Control Tablet



The LinuxFace 7 offers a secure, TouchLess and cost-effective way of controlling who has access to your building and when their access is allowed.

Installing an access control system with face recognition means that you will never have to replace lost or stolen tokens and a face can easily be barred from the system.

Our face tablets can be mounted to a standard door or any make of pedestrian or vehicle entrance control turnstile, gate, or barrier.

EvolveFace 5 - Face Recognition Access Control Tablet

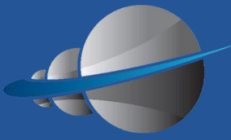


The EvolveFace 5 is an employee face recognition terminal with time and attendance that can also be used for access control to a secure area.

The terminal is ideal for construction, manufacturing, small or large companies, food processing, education, hospitals, and surgeries.

Face recognition for time and attendance control offers a secure, TouchLess and cost-effective way of controlling who has access to your building and when their access is allowed.





ACCESS CONTROL

Face Recognition with Temperature Detection.

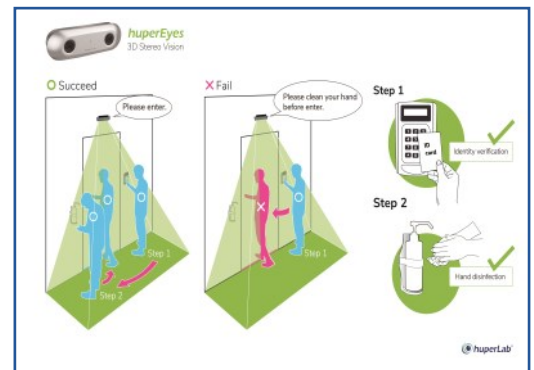


Face recognition for entrance control offers a secure, TouchLess and cost-effective way of controlling who has access to your building and when their access is allowed.

LinuxFace 2.45 face recognition tablet is the smallest device in the world providing deep learning technologies with high performance processor and algorithms.

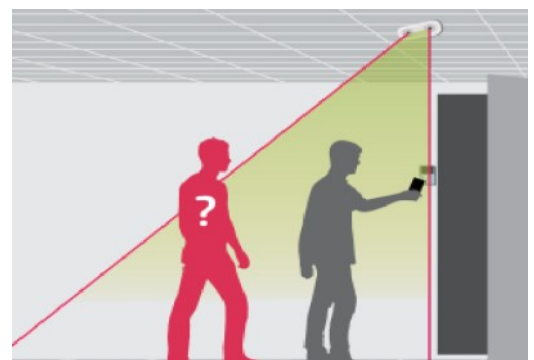
This device is an ALL-IN-ONE face detection, IC & ID card reader. Due to its size this device is ideal for securing an individual room within your building. It can be used in conjunction with our 3D tailgating detection camera

3D Tailgating Detection and two-point verification.



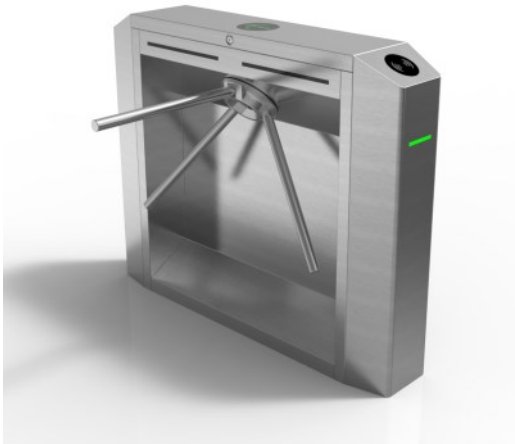
The 3D depth-sensing technology can achieve the high accuracy level to 98% with high tolerance to light and shadow changes, and the overlapping of moving objects.

With greater video analytics integration and system flexibility, it is capable of people counting, virtual fence, surveillance and security, and customer service improvement for retail stores, transportation, home and store security.



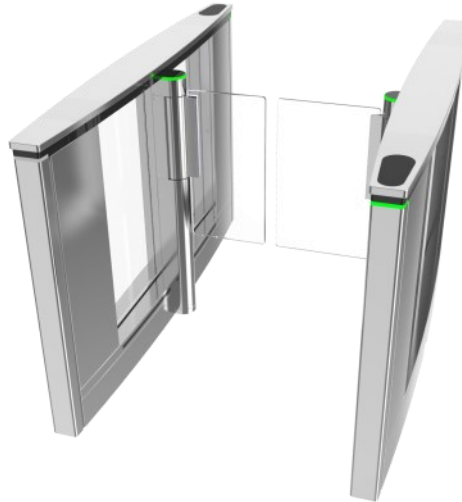
ACCESS CONTROL

Pedestrian Entrance Tripod Turnstile

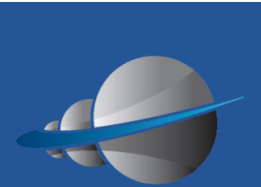


The TT300 modular design tripod turnstile offers, cost-effective, fast operating, easy to use, reliable entrance solution for internal or external use in areas where there is a large and constant flow of people.

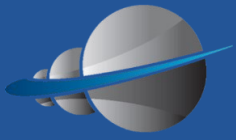
Pedestrian Entrance Gates



The PG300 range of both single and double leafed paddle gates provide safe, high speed, bi-directional pedestrian throughput, with an elegant and sophisticated look, essential for today's corporate and educational environment.



Products For Schools



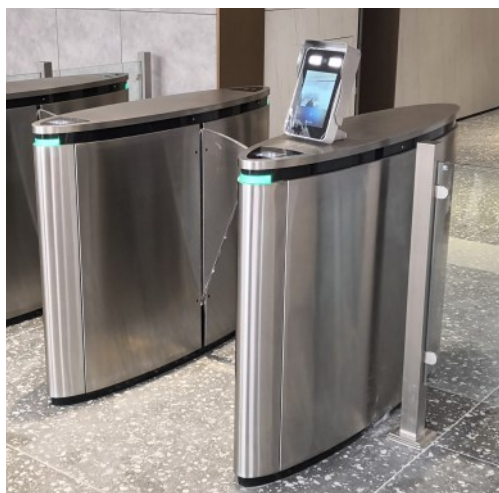
Access Control

Pedestrian Entrance Retractable Gates.



Our **RG** series of retractable leafed gates are designed to provide optimum pedestrian throughput but in an elegant, sophisticated, and discreet manner, essential for today's educational and corporate environment.

When installed in conjunction with any access control system, the gates provide a low-level entrance controlled solution.



Pedestrian Entrance Full Height Turnstile.

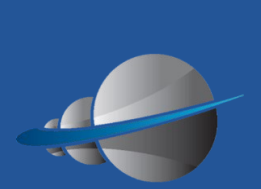
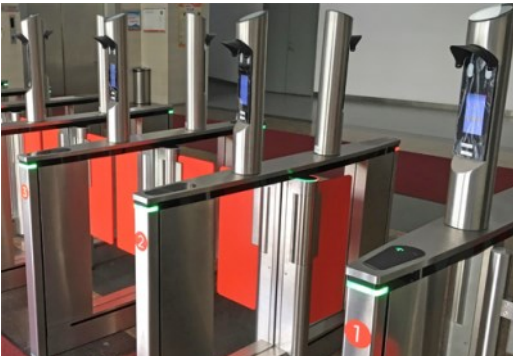


The FT range of full height turnstiles has been designed to provide high level external perimeter security for pedestrian movement in and out of restricted areas for staff, visitors, and contractors.

When installed in conjunction with any access control system, the turnstile provides a high-level entrance controlled solution.

ACCESS CONTROL

All our pedestrian turnstile and gates can be fitted with the latest entrance and access control devices such as facial recognition and temperature detection.



Products For Schools

HOW TO CONTACT US

Evolve Security Products Limited.

Unit 5, Kenyons Yard,
Weyhill Road,
Andover,
Hampshire.
ENGLAND
SP10 3NP



Email:

sales@EvolveSecurityProducts.com

Telephone:

01264 334786

Web:

www.EvolveSecurityProducts.com

